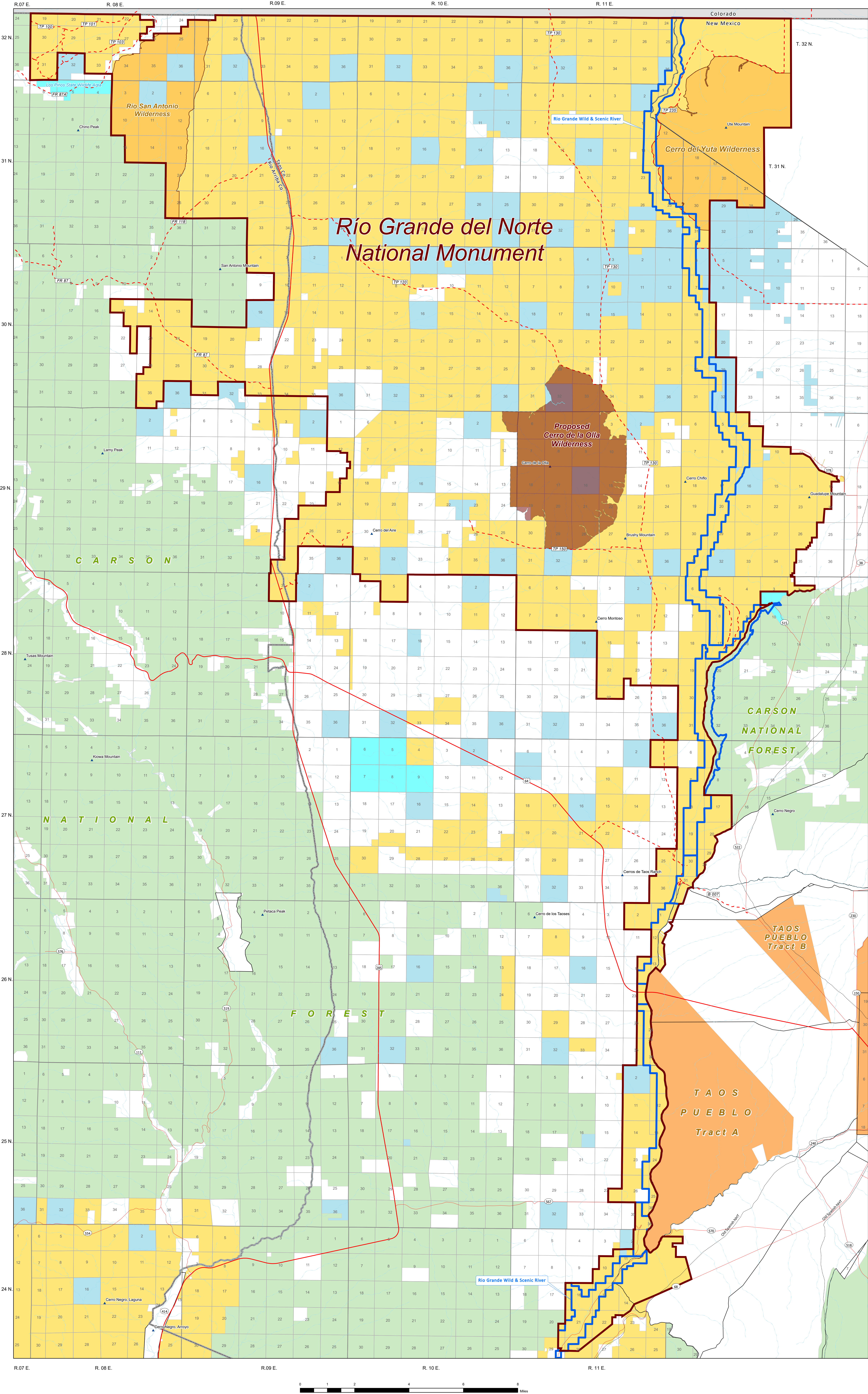


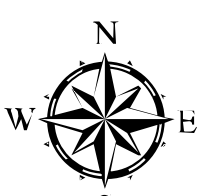
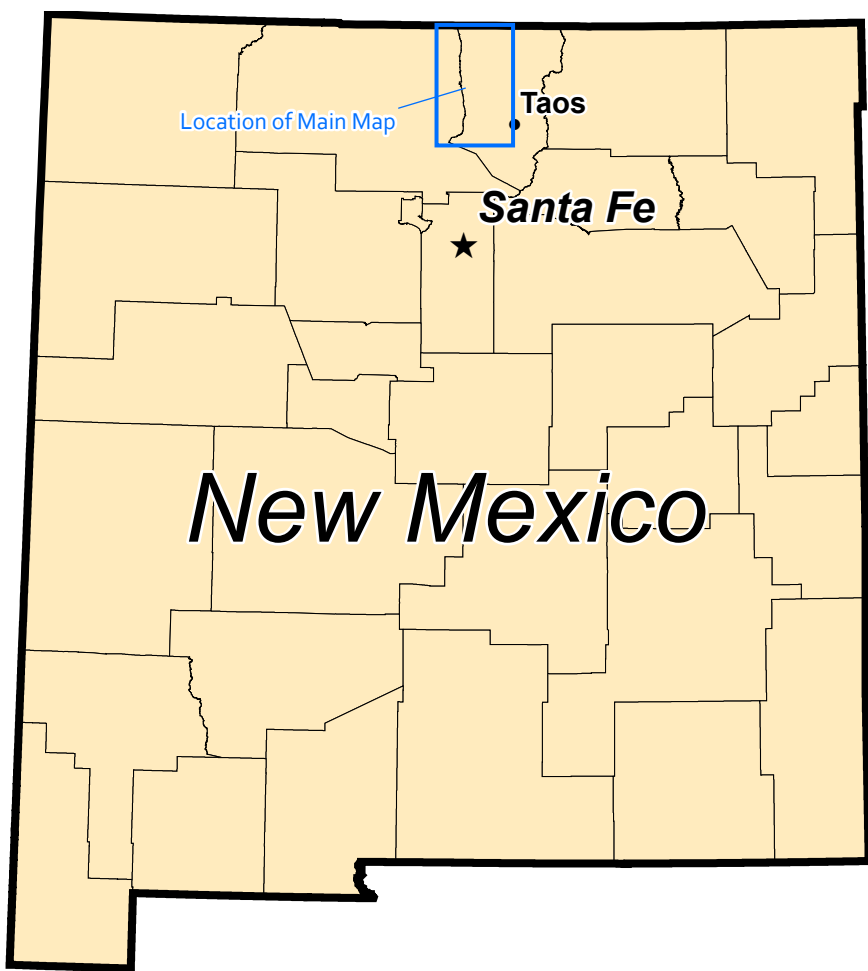
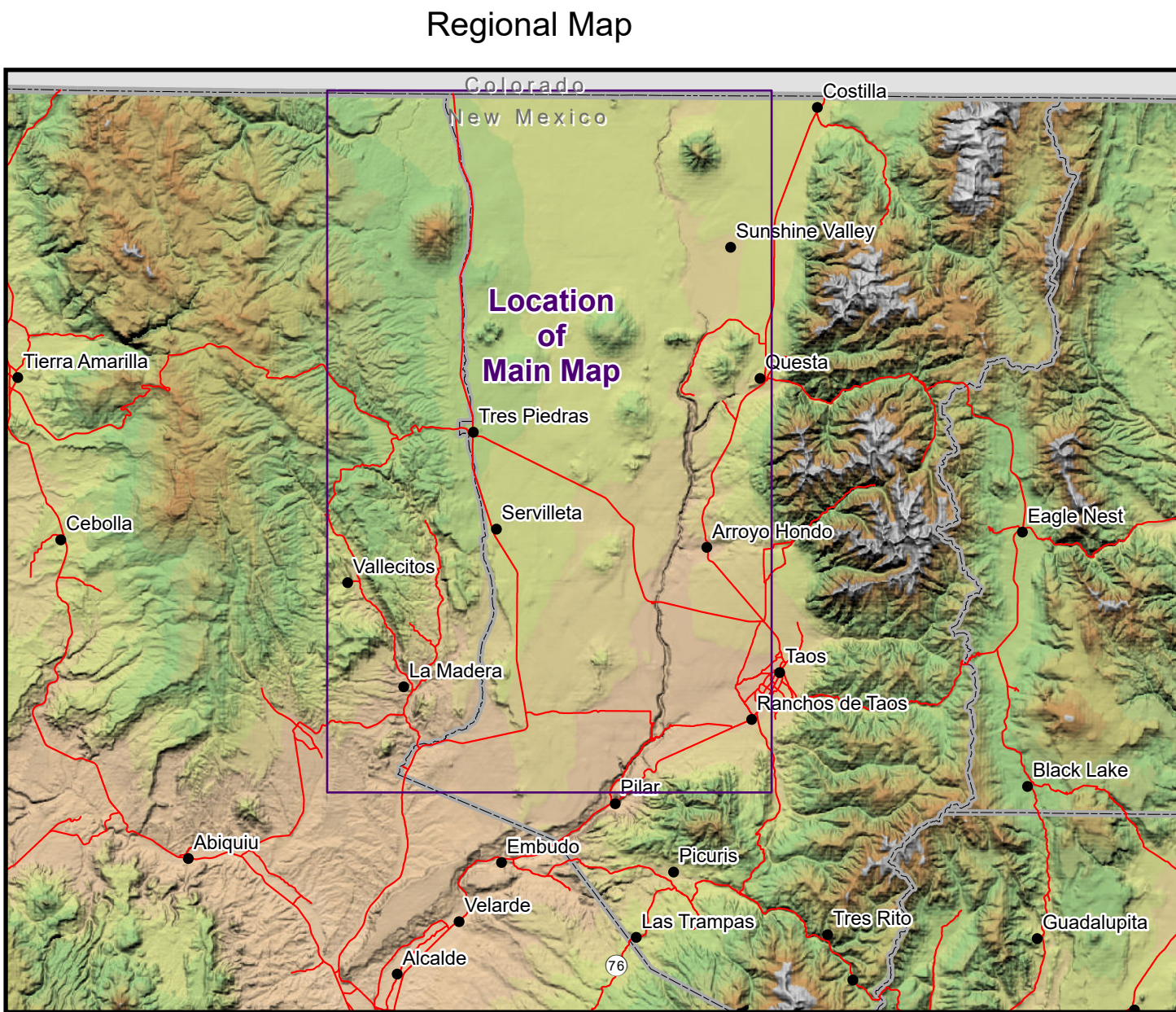
Proposed Cerro de la Olla Wilderness
January 16, 2020

This map prepared at the request of Senator Martin Heinrich.



Legend

- Proposed Cerro de la Olla Wilderness
- Rio Grande del Norte National Monument
- BLM Wilderness
- Rio Grande Wild & Scenic River
- Bureau of Land Management
- Carson National Forest
- Taos Pueblo
- Private
- State
- State Game & Fish
- Primary / Secondary Highway
- Other Roads
- County Boundary
- Intermittent Stream
- Stream



0 1 2 4 6 8 Miles

1:80,000

This map intended to plot at 34"x44".

Note: The lands within NM 134651 and NM 137218 on this map are acquired and presented as BLM administered lands, but are pending final approval. Produced by the BLM New Mexico State Office - 01/16/2020